



HEALTH SYSTEM RESPONSES TO COVID-19 IN OECD COUNTRIES

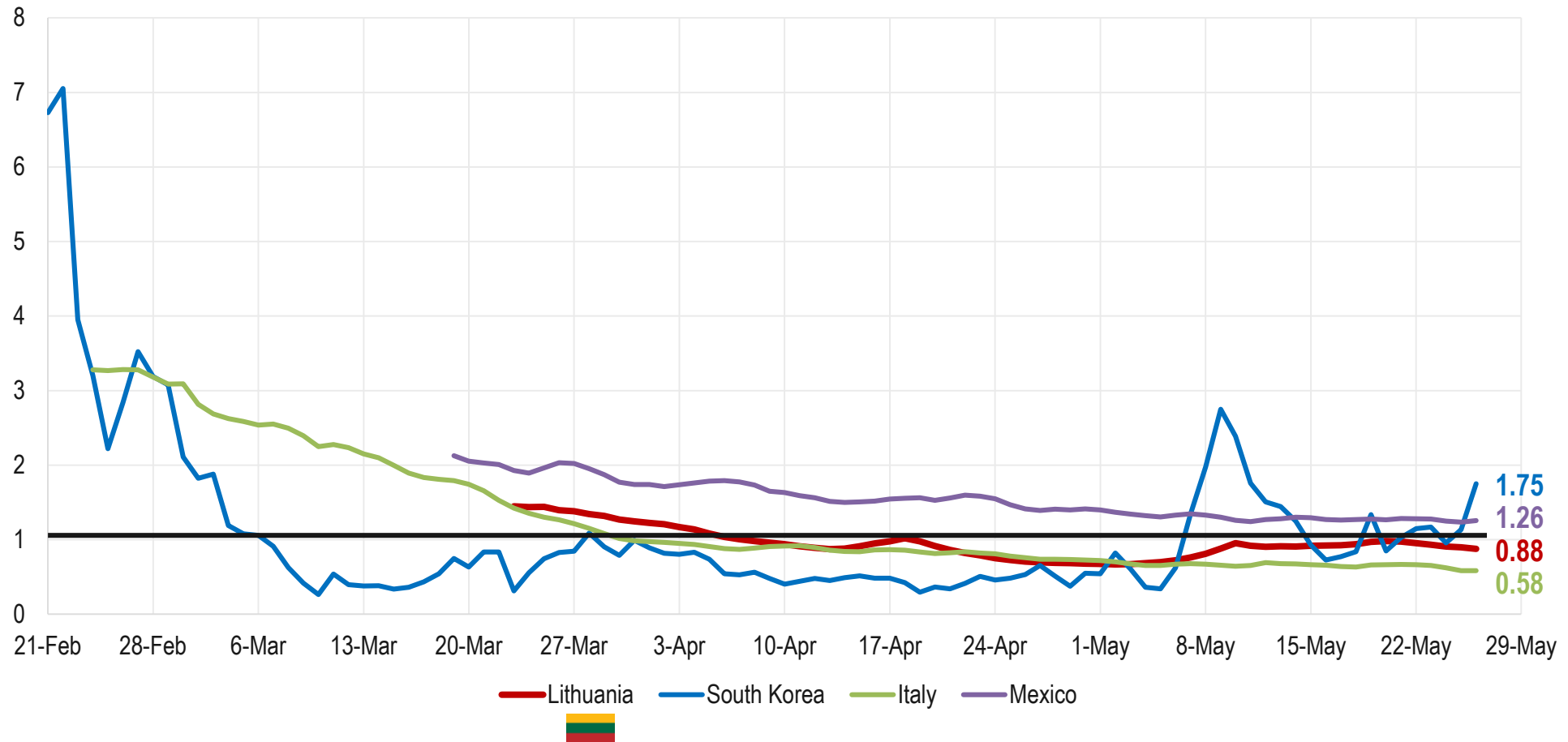
Webinar:
COVID-19 MANAGEMENT STRATEGY IN LITHUANIA
Wednesday 3rd June

Frederico Guanais
Deputy Head of the OECD Health Division



The evolution of the reproduction number (Rt), or why we all need to remain vigilant

Real-Time Estimates of the Effective Reproduction Rate (Rt) of COVID-19

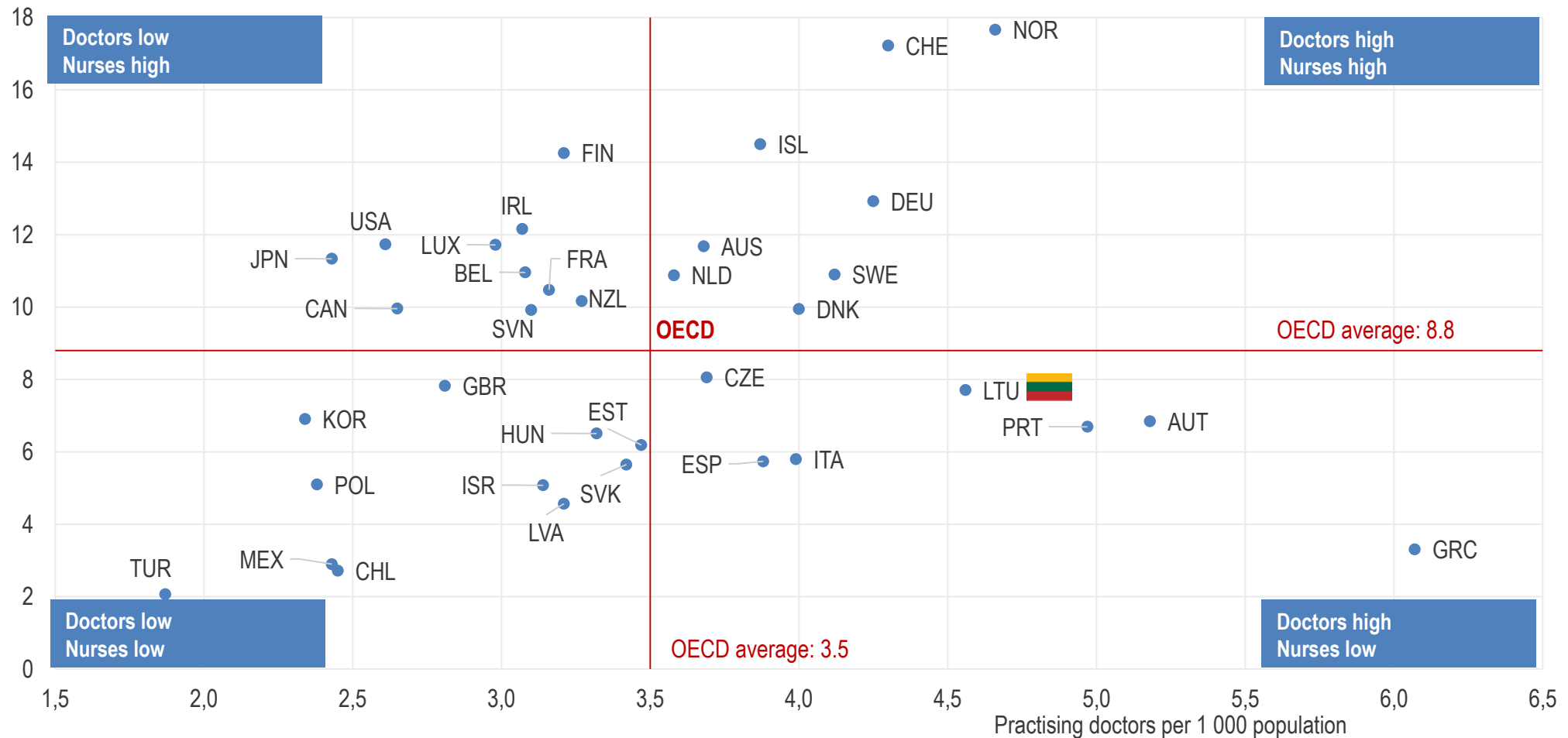




Lithuania was well-placed to respond to COVID-19: More doctors, slightly fewer nurses than most countries

Number of doctors and nurses in OECD countries, 2017 (or nearest year)

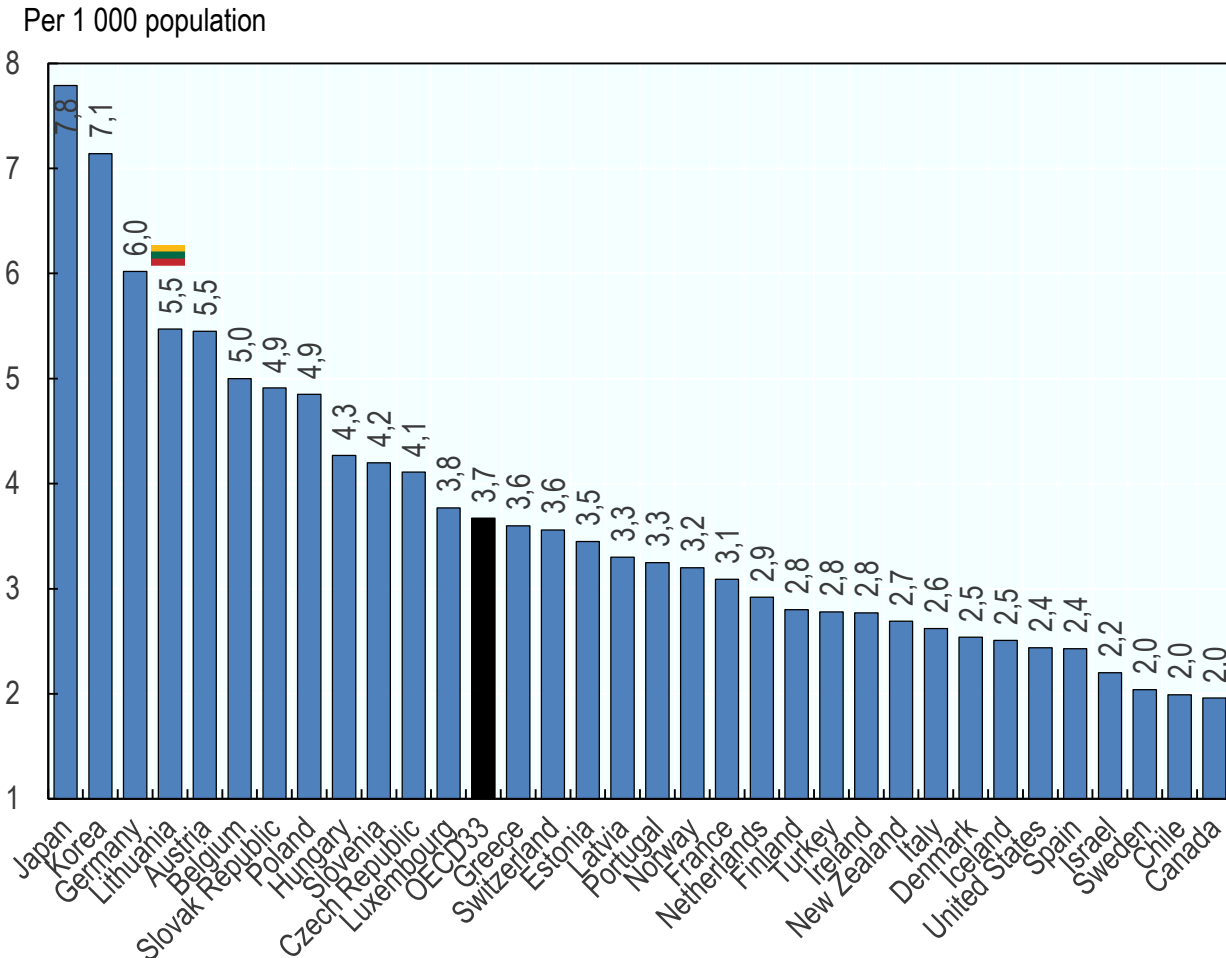
Practising nurses per 1 000 population



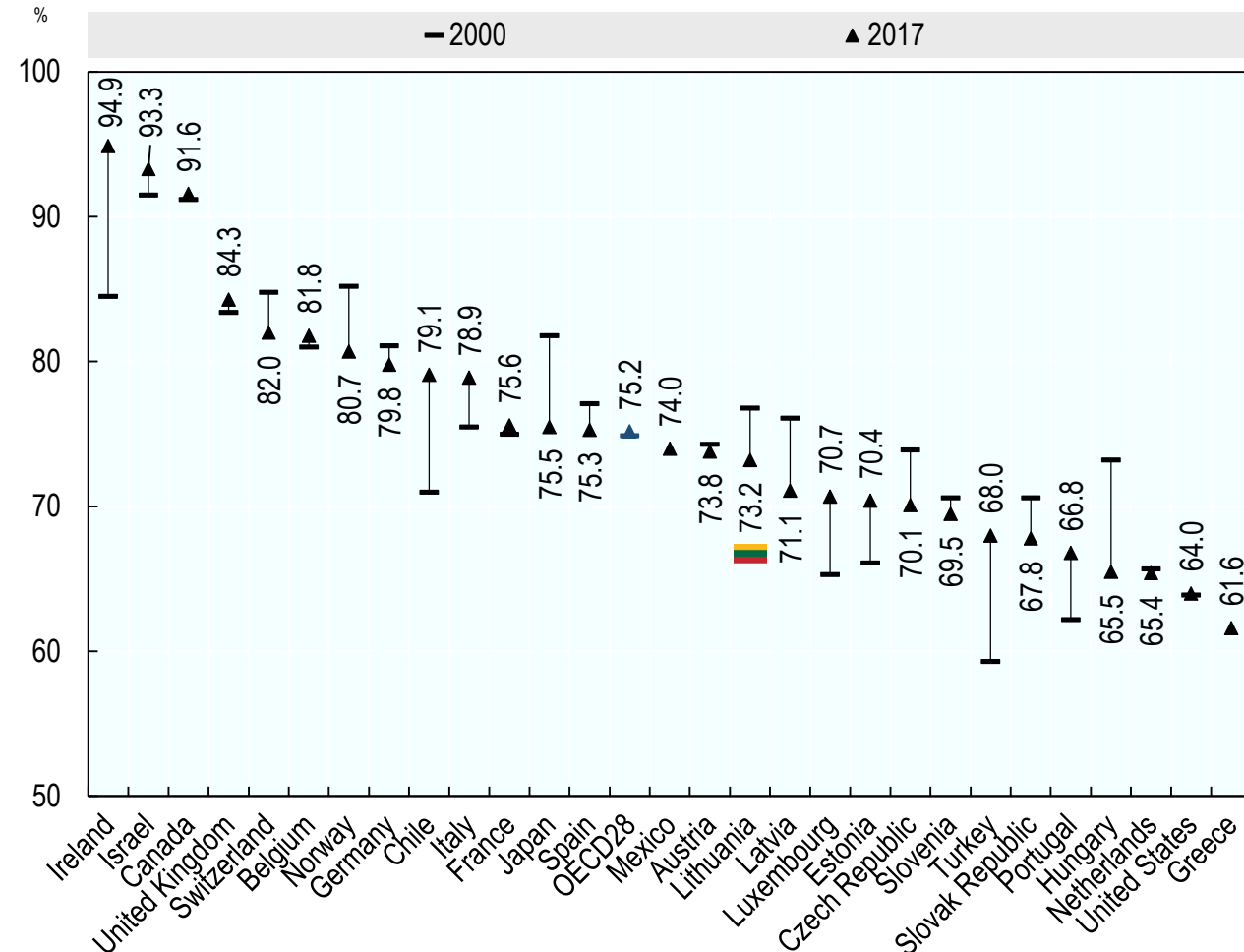


Lithuania was well-placed to respond to COVID-19: 4th highest availability of acute care hospital beds in OECD

Acute care hospital beds in OECD countries,
2017 (or nearest year)



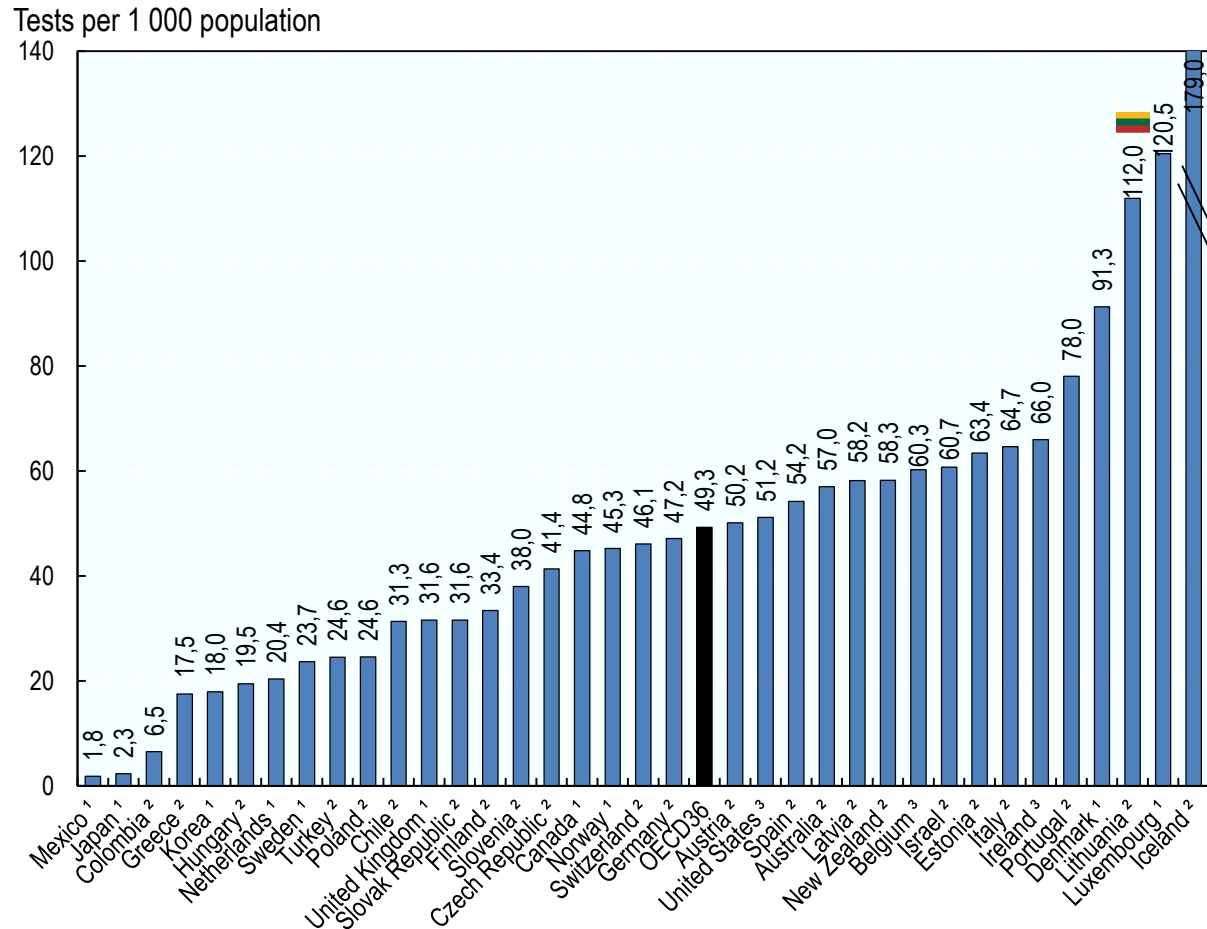
Occupancy rate of acute care beds in OECD countries,
2000 and 2017 (or nearest year)



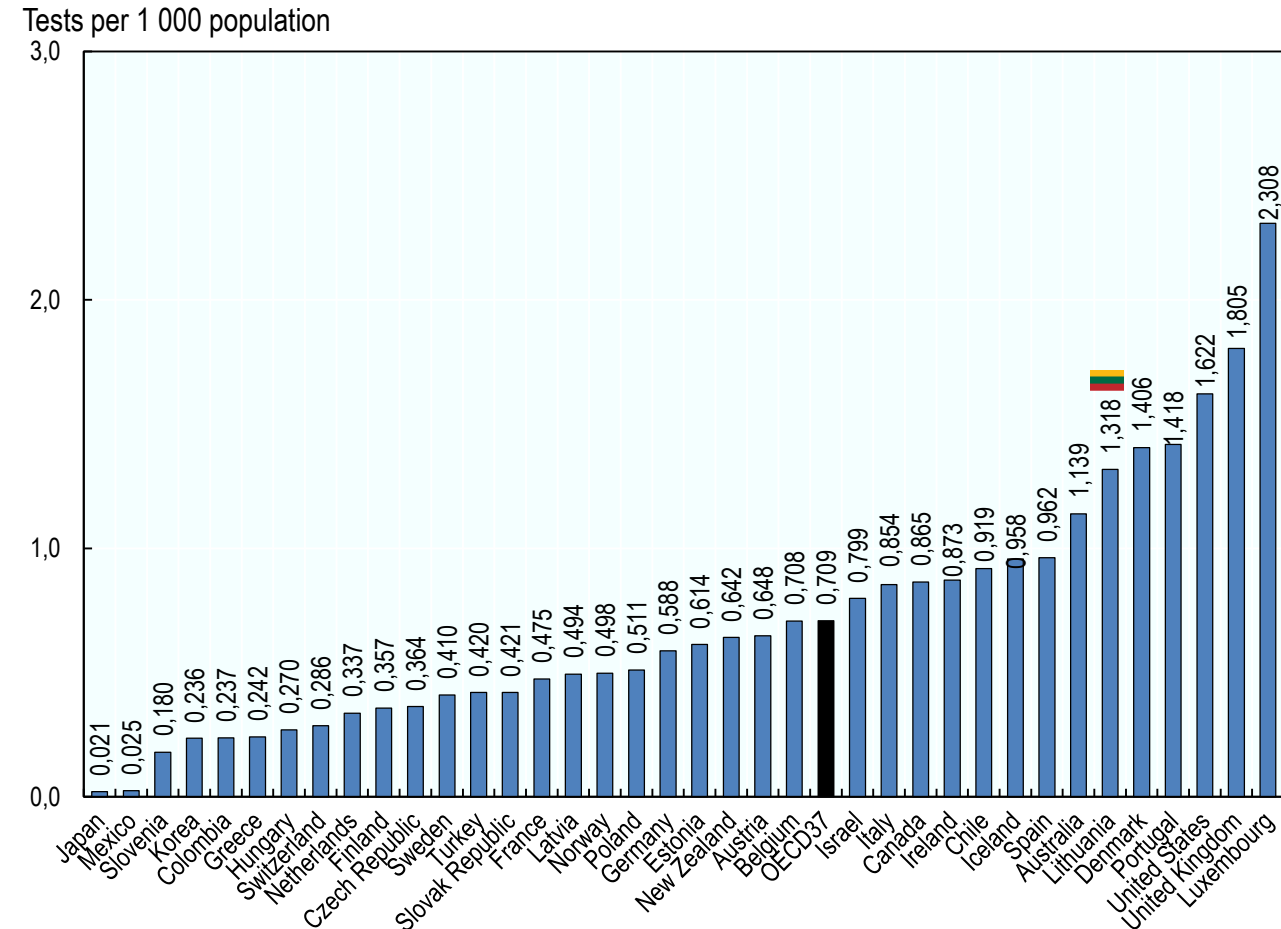


Lithuania's effective test, track, and trace response: Extensive and consistent testing

Diagnostic testing for COVID-19 in OECD countries, cumulative total



Diagnostic testing for COVID-19 in OECD countries, daily (3-day rolling average)

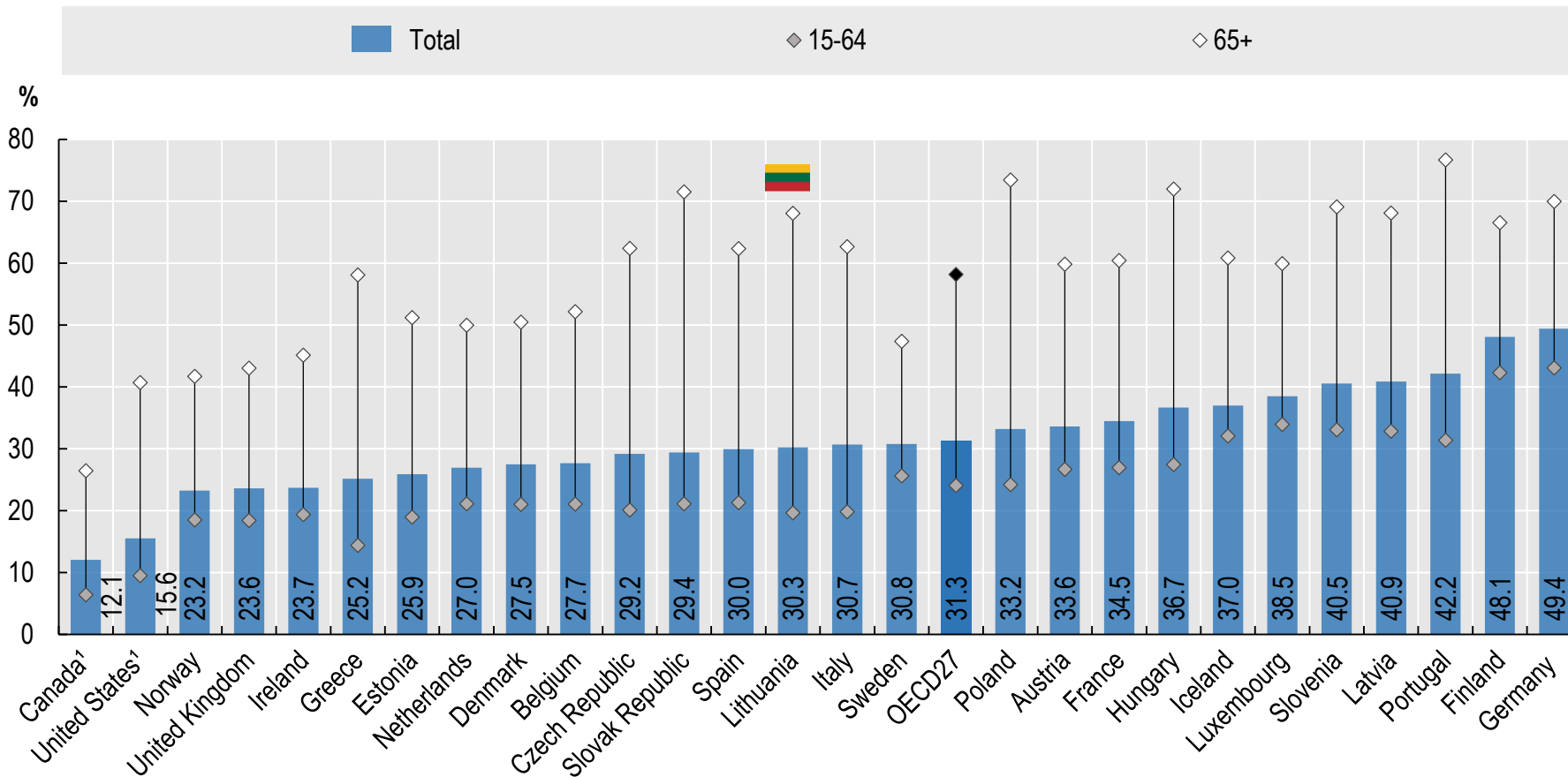


Notes: 1. People or cases tested. 2. Tests performed or samples tested. 3. Units of test unclear or inconsistent. Differences exist as to whether figures include tests, or individuals tested; whether they include all lab tests (public and private) or not; on how regularly data is updated by each country; and other aspects. Date of testing data shown in the graph varies between 20 May and 1 June 2020. Source: Our World in Data. <https://ourworldindata.org/covid-testing> accessed 2 June 2020



The things to watch closely: COVID-19 imposes a double burden on people with chronic conditions

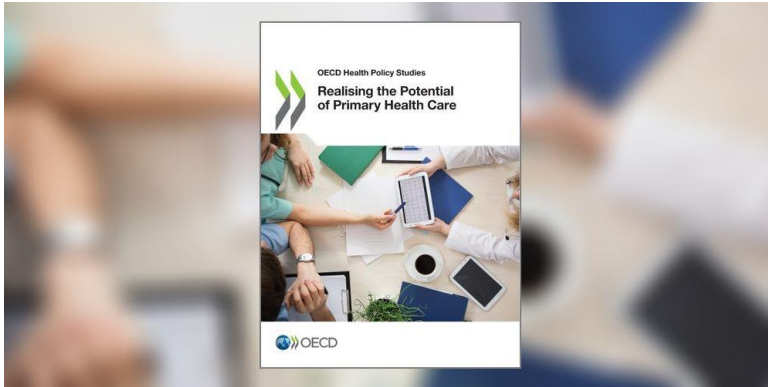
People living with 2 or more chronic diseases, 2014



1/3 of the population live with 2 or more chronic conditions

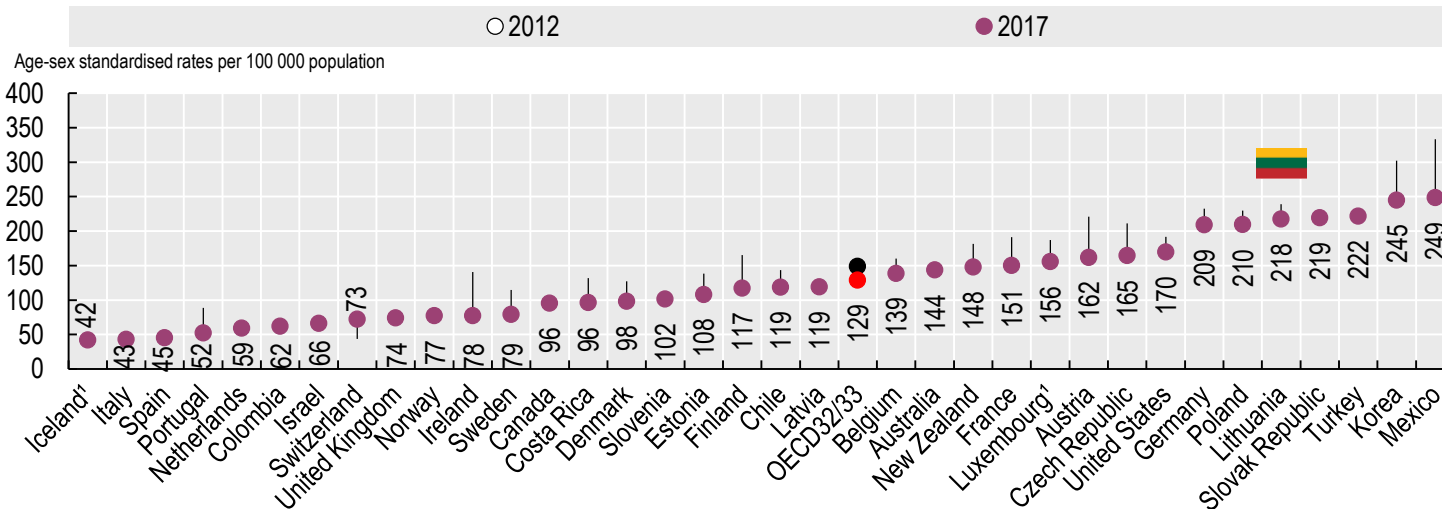


Things to watch closely: Opportunities for improvements in primary health care

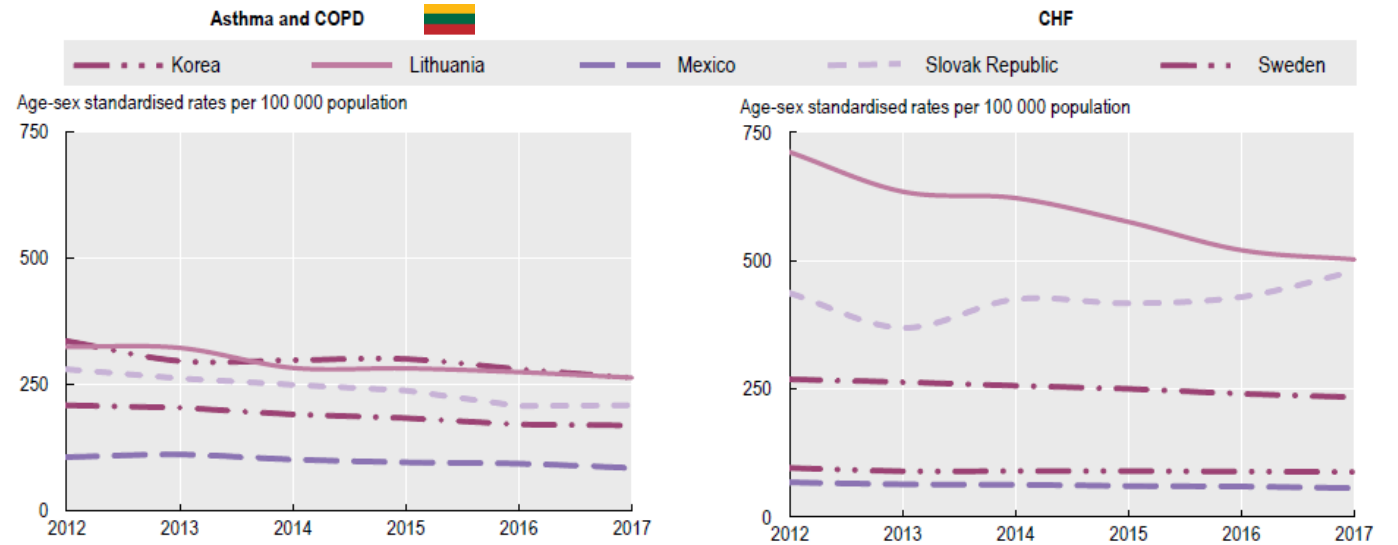


→ <http://oe.cd/PHC>

Diabetes hospital admissions in adults, 2012 and 2017 (or nearest year)



Trends in hospital admission in adults, selected countries 2007-2017 (or nearest year)



Source: OECD (2019) Health at a Glance 2019. OECD indicators.



Across the OECD, COVID-19 has disrupted the continuity of care prompting countries to react

- **France:** online bookings for GPs fell 44% and specialist care by 71%
- **United Kingdom:** emergency rooms visits decreased by 29%
- **United States:** visits to ambulatory care declined nearly 60% in mid-March

(Source: <https://sante.lefigaro.fr/article/coronavirus-l-inquietante-baisse-des-consultations-medicales-en-ville/>; ; <https://www.commonwealthfund.org/publications/2020/apr/impact-covid-19-outpatient-visits>
<https://www.bmj.com/content/369/bmj.m1607>)

In response, countries have:

- Scaled-up Telemedicine
- Scaled-up non-resource-intensive interventions that encourage self-management
- Developed guidelines to protect vulnerable populations (France)
- Expanded 'hospital at home programs' (Australia, Italy, New Zealand and UK)



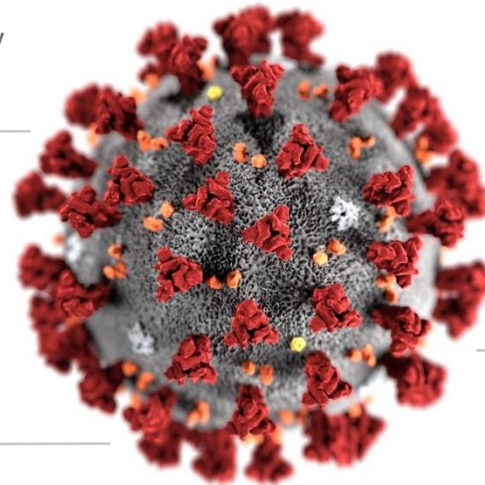
How are countries using telemedicine now?

See <http://www.oecd.org/health/COVID19-OECD-Health-System-Response-Tracker.xlsx> for more

Expanded provider payment

e.g. Estonia, Slovak Republic, Poland, Japan, Belgium, US, Ireland, France, Australia

SARS-CoV-2



New services and platforms

e.g. Slovak Republic, Greece, Israel, Turkey, Luxembourg, Brazil, Chile, Spain

New guidelines and regulations

e.g. Belgium, France, US, Japan

New legislation allowing use

e.g. Costa Rica, Peru, Estonia, Poland

High-level political encouragement

e.g. Switzerland, UK, France, US



The impact of COVID-19 on mental health and wellbeing

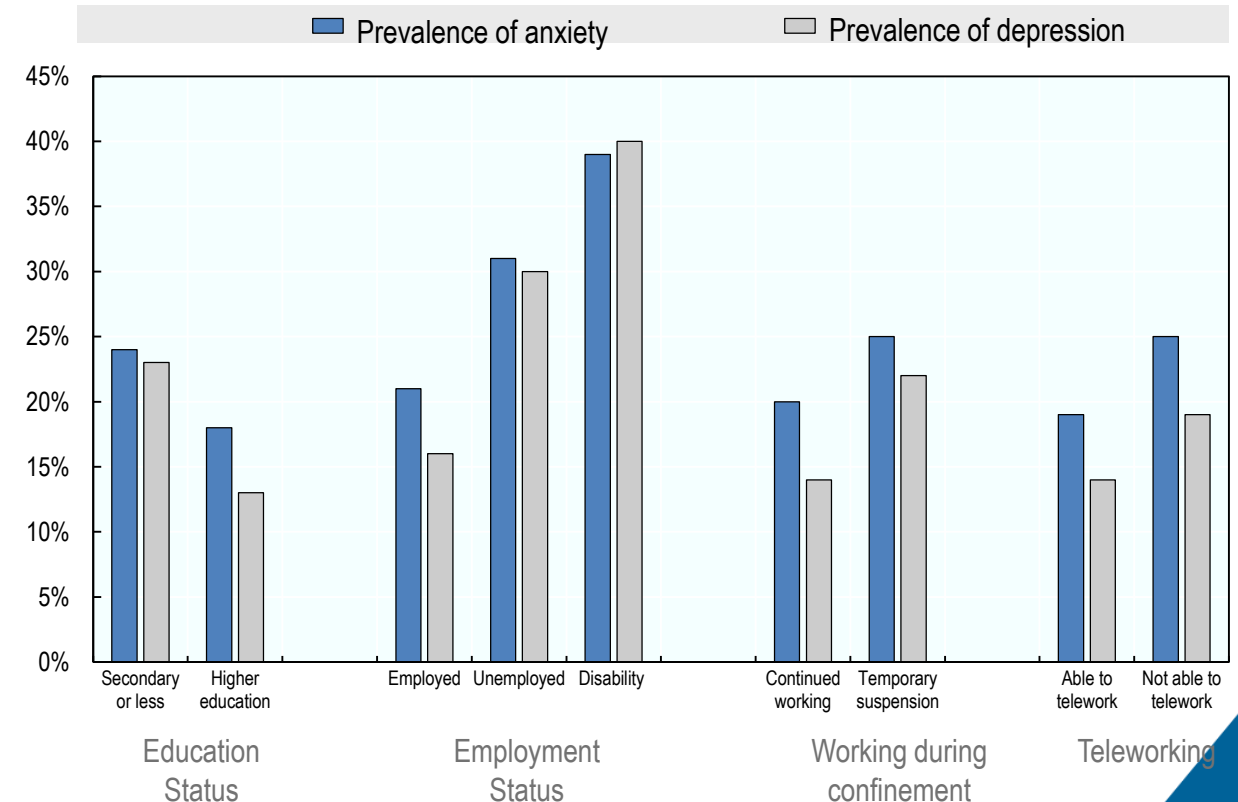
COVID-19 presents a risk to mental health and wellbeing for:

- Front line workers
- Mental health service users
- General population

In response, countries are offering:

- Phone and online support services for the general population (10 OECD countries)
- Dedicated psychosocial support for healthcare workers over the phone, online or in person (e.g. FRA, IRE, UK)

The impact has been more significant for those with less secure employment and who are less-able to continue working



TACKLING CORONAVIRUS (COVID-19)
CONTRIBUTING TO A GLOBAL EFFORT

www.oecd.org/coronavirus/en/#policy-responses

- Testing for COVID-19: A way to lift confinement restrictions
- Beyond Containment: Health systems responses to COVID-19 in the OECD
- Supporting livelihoods during the COVID-19 crisis
- Supporting people and companies to deal with the COVID-19 virus
- Migrant doctors and nurses in COVID-19 crisis
- VET in a time of crisis:
- Public employment services on the frontline for jobseekers, workers and employers
- Children and COVID-19
- Women at the core of the fight against COVID-19 crisis

Thank you

